

## ■ Global Startup Campus (GSUC) Initiative

### <Background>

There is an urgent need to build a sustainable economic and social system on a global scale through the resolution of issues that need to be addressed globally, such as infectious diseases and climate change. Science, technology, and innovation are key, just as vaccines were the trump card in the coronary disaster. In addition, there is an urgent need to accelerate the global deployment of human resources and research seeds from Japanese universities and research institutions to accelerate Japan's economic revitalization.

### <Outline of the Initiative>

To address the above issues, the Japanese government established the "Office for Promotion of the Global Startup Campus Initiative" in the Cabinet Secretariat in August 2022.

As an Asian hub of the global innovation ecosystem, it will combine research and incubation functions in the field of deep tech and establish a "Global Startup Campus," a research and innovation center with the mission to continue creating various social impacts on a global scale through methods such as startup creation. The "Global Startup Campus" will be established in central Tokyo (Meguro/Shibuya).

This research and innovation center will also work with local ecosystems in each region to promote the formation of an ecosystem that will generate world-class standard businesses throughout Japan.

The government of Japan is working closely with the Massachusetts Institute of Technology (MIT), a leading university in the United States, to conduct a feasibility study for the Global Startup Campus in Tokyo.

### <Features of the Research and Innovation Center>

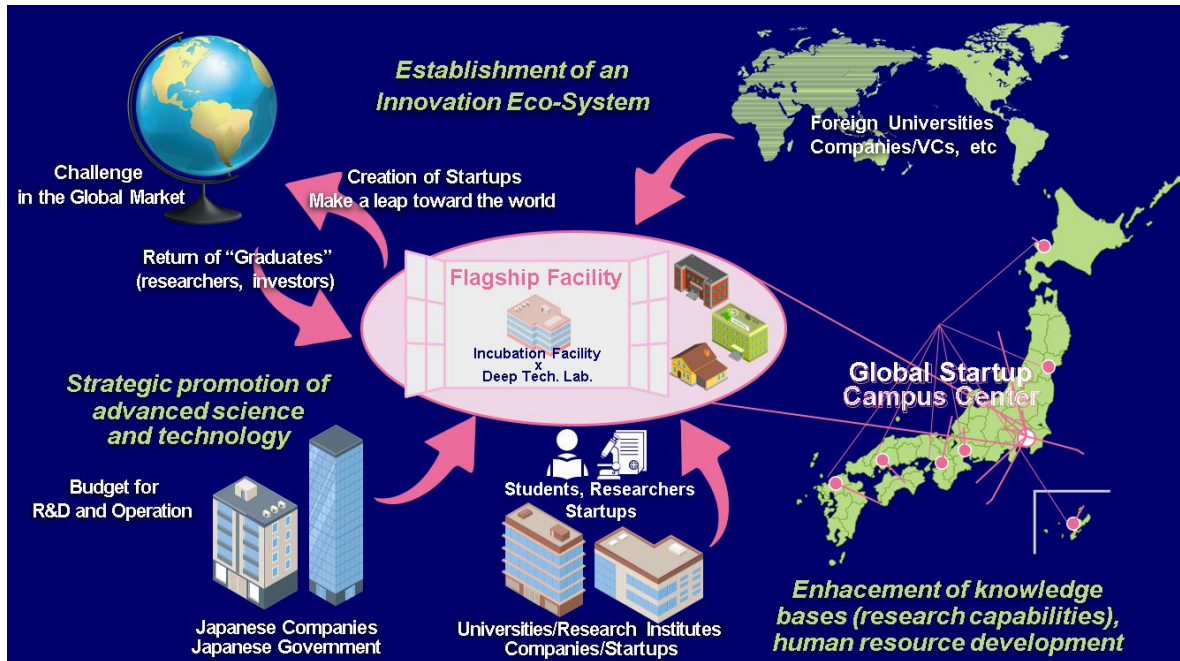
The center aims to be a completely global place where all activities are conducted in English, where the world's brightest minds, especially young people, have a strong desire to jump in and engage in friendly competition, and where diversity and energy abound, with many non-Japanese, female researchers, entrepreneurs, and others participating.

### <Related Budget>

- Second supplementary budget for FY2022: 900 million yen (appropriated by the Cabinet Office)

Coordination with overseas universities toward the realization of the GSUC concept, including feasibility studies for collaboration in the GSUC Initiative, and planning of necessary buildings for the establishment of the GSUC.

- Second supplementary budget for FY2022: 6.6 billion yen (appropriated by MEXT)  
Prior to the completion of the GSUC building, international joint research with overseas institutions with which the GSUC is expected to collaborate, will be conducted.



<A core center that will serve as a “window” to the world (image)>